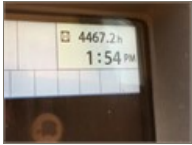




2012 HITACHI ZX250 LCN-5

| Year | Serial Number | Stock Number |
|------|-------------------------|--------------|
| 2012 | 1FFDCB70LCE430150CE0150 | |

| Hours | Horsepower | Location |
|-------|--------------|--|
| 4467 | 197.13024723 | Equify TM - Mike Culverhouse 777 Main St. Fort Worth, Texas USA 76102 |



| Category Specifics | | |
|--------------------|-------|--|
| Stick Size | 9' 8" | |
| Stick Condition | Fair | |
| Swing Bearing | Good | |
| Boom Condition | Good | |
| Bucket Size | 48" | |
| Bucket Condition | Good | |
| Counterweight | Good | |
| Pins/Bushings | Fair | |



| General Appearance | | |
|---------------------|--------|----------------------|
| Guards/Covers/Steps | Fair | |
| Hood/Grill/Fenders | Fair | |
| Glass/Mirrors | Fair | Replaced Front Glass |
| Doors | Good | |
| Cab Condition | Fair | |
| Cab Type | Closed | |
| Paint | Fair | |
| Seat | Fair | |
| Heater | Yes | |



| General Appearance Interior | |
|-----------------------------|----|
| A/C | No |

| Engine | |
|----------------------|------------|
| Engine Manufacturer | Isuzu |
| Engine Model | AL4HK1X |
| Engine Serial Number | 4HK1494996 |
| Horse Power | 147 kW |
| Oil Leaks? | No |
| Smokes | No |
| Coolant Leaks | No |
| Coolant Levels | Good |



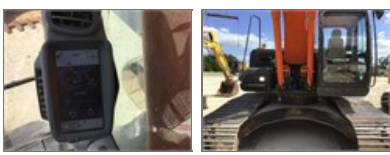
| Powertrain | |
|-------------------|-------------|
| Transmission Type | Hydrostatic |



| Chassis | |
|----------|--------|
| Pad Type | Triple |
| Pad Size | 31.5" |



| Electrical | | |
|---------------------|------|-------------------------|
| Batteries | Good | |
| Warning Lights Work | Yes | |
| Gauges Work | Yes | |
| Lights Work | Yes | Boom Light Disconnected |



Hydraulics

| | |
|-----------------|------|
| Hoses | Good |
| Cylinder Rods | New |
| Pumps | Good |
| Hydraulics Leak | No |

